

Epidendrum scrotiforme

EST. DOMÍNGUEZ, S. MESA, E. SANTIAGO & HÁGSATER, SP. NOV.

Type: Colombia. Antioquia: Municipality of Don Matías, Vereda La Piñuela, "Relleno Sanitario La Pradera", 1200 m. November 2019. *J. D. Saldarriaga 0087*. (holotype: HUA, LCDP voucher).

Paratype: Colombia. Antioquia: Municipality of San Rafael, Vereda Quebradona, Río Churimo, 1050 m. October 2019. *J. P. Tobón 3089* (paratype: JAUM).

Epidendrum scrotiforme is most similar to *E. latisegmentum* C.Schweinf., but can be distinguished by the prominent nectary forming a vesicle protruding from the pedicellate ovary (vs. no prominent vesicle in the pedicellate ovary).

Plant epiphytic, to 50 cm. *Roots* thick, 5 mm in diameter. *Stems* rigid, 16.5–21 × 0.25–0.5 cm. *Leaves* 3 to 5, elliptic, thin, undulated, on a same plane, lustrous; distributed along the apical half of the stems, unequal, progressively larger, blade 4–12 × 2–4 cm. *Sheaths* turning brown as they dry, cylindrical, tubular, rugose, compressed against the stem, 2–5 × 0.25–0.5. *Floral bracts* triangular, lustrous, apex attenuated, profoundly cleft, embracing, 4–5 × 1.4 mm. *Flowers* successive, fleshy, on the distal part of the inflorescence. *Dorsal sepal* green turning ochre, free, lanceolate, 5-veined, fleshy, 20–21 × 7–8 mm, apex rounded, margin slightly revolute, lustrous. *Lateral sepals* green turning ochre, obliquely united to the column, 8-veined, elliptic, obliquely oblong-elliptic, 21–22 × 11.4 mm, apex rounded, fleshy, lustrous, margin slightly revolute. *Petals* translucent green to yellow, 3-veined, spatulate, 18–20 × 5–6 mm, margin slightly revolute, central vein dorsally carinate. *Lip* light green to ochre, united to the column, transversally elliptical, base widely cuneate, 23–25 × 23–24 mm, apex rounded, indumentum papillose, papillae translucent, sparse. *Callosity* bicallous, calli laminar, short, disk with three intercallous ribs, thin and extending to the middle of the labellum, two calli with three elongated carinae, being the middle one longer and wider. *Column* green and turning white distally, short, straight, obliquely triangular when seen from the side, nectariferous cavity tubular and deep, 9.8–10.5 × 4.5–5 mm, papillose, lateral stigmatic lobes very small. *Rostellum* apical and depressed. *Anther cap* white, elliptical, slit transversal, papillose, 1.5 × 2.4 mm. *Pollinia* pale

yellow, 4, in two pairs, 2 mm. *Nectarium* penetrating the ovary almost entirely, wide, forming a prominent scrotiform vesicle, laterally flattened, lustrous, 13.1–13.3 × 9.4–9.8 mm. *Ovary* terete, narrow at the base, striated, 17–19 × 2 mm. *Capsule* not seen.

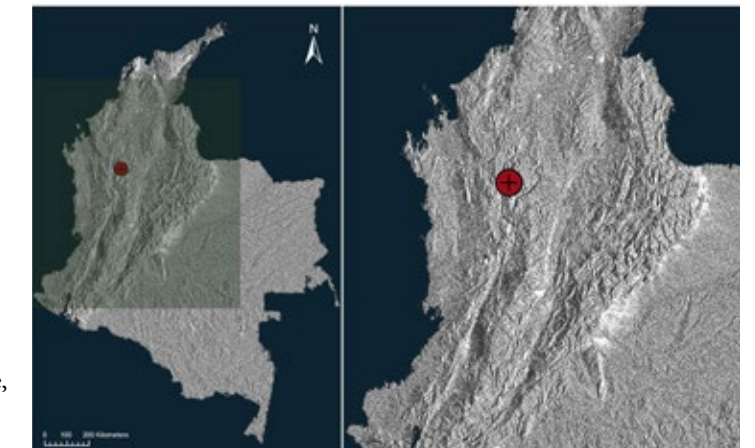
Etymology: From the Latin *scrotum*, the pouch that supports the testicles, in prominent reference to the shape of the vesicle of the nectary.

Epidendrum scrotiforme belongs to the Scrotiformis complex of the Incomptum group. The lip is reminiscent of *E. megalopentadactylum* Hágsater & Huayta but the habit of that species is longer with stems complanate and ancipitose. The transversely elliptic lip is reminiscent of *E. latisegmentum* C.Schweinf., but that species clearly has 2 prominent calli on the reniform lip and no prominent vesicle in the pedicellate ovary, and the 3 ribs of the lip are low and wide.

References

Carnevali, G., & G.A. Romero. 2000. *Epidendrum pogonochilum* in *Orchid. Venez.* ed. 2, 3: 1133.

Hágsater, E., 2006, *Epidendrum latisegmentum* in E. Hágsater & L. Sánchez S. (eds.), *The Genus Epidendrum, Part 5, Icon. Orchid.* 8: pl. 850.



LCDP: *Epidendrum scrotiforme* Est. Domínguez, S. Mesa, E. Santiago & Hágsater. A. Habit. B. Flower. C. Dissected perianth. D. Nectarium, ovary, column and lip, side view. E. Column. F. Anther cap and pollinia.

